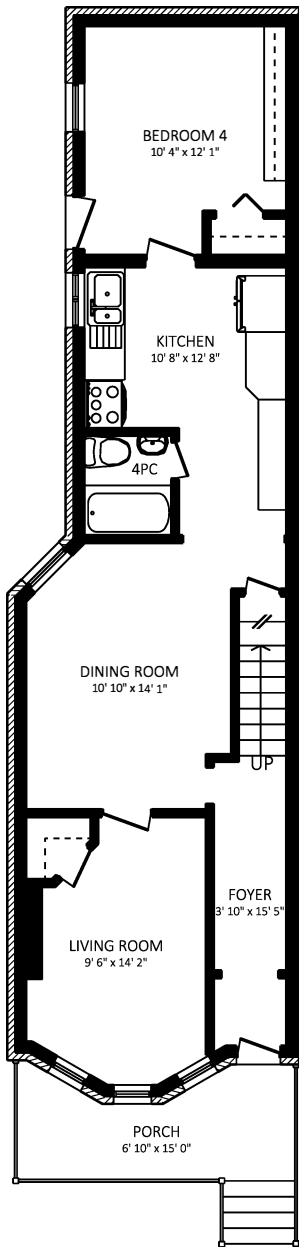
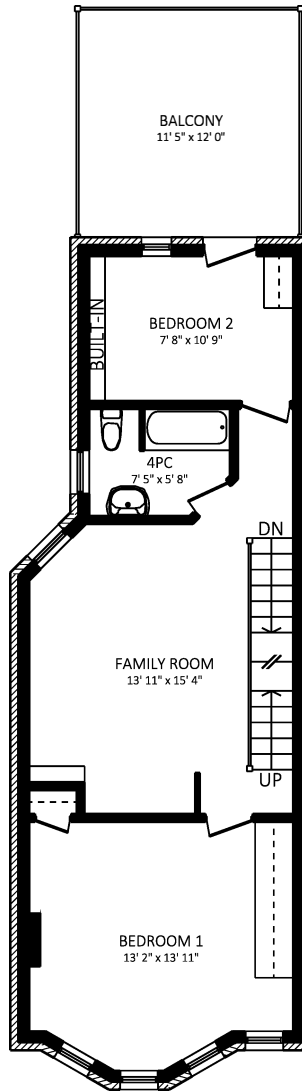


531 MANNING AVENUE

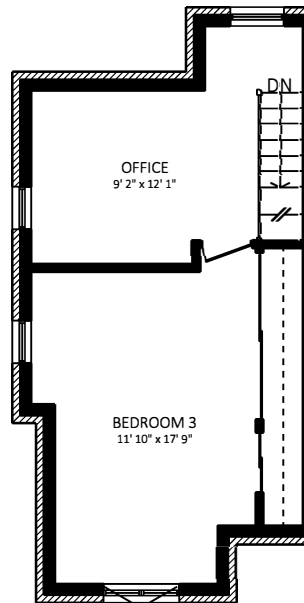
TORONTO, ONTARIO



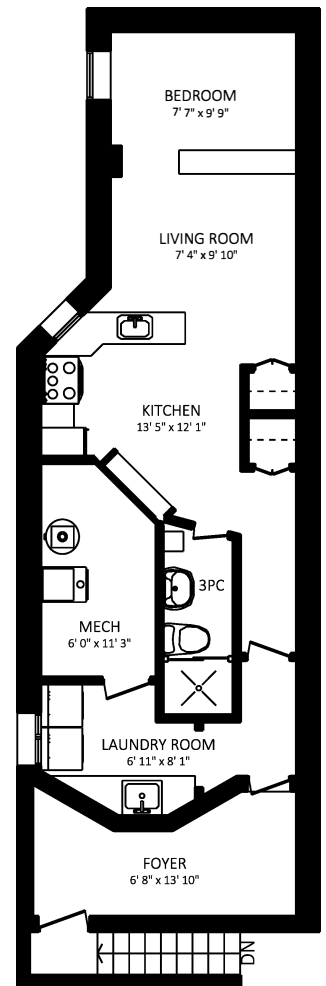
MAIN FLOOR
 782 SQUARE FEET APPROX.
 8'3" CEILING



SECOND FLOOR
 633 SQUARE FEET APPROX.
 8'3" CEILING



THIRD FLOOR
 447 SQUARE FEET APPROX.
 7'5" CEILING



LOWER LEVEL
 714 SQUARE FEET APPROX.
 7'5" CEILING

All Measurements Should Be Considered Approximate Until Verified By Buyer.
 Listing Broker And Seller Assumes No Responsibility For The Accuracy Of Any
 Information Shown.